

In summary

Chiltern Church is a community of around 160 adult members and friends and nearly 100 children and youth situated in South Sutton in the London Borough of Sutton. The church is an independent evangelical church and a member of the Evangelical Alliance. The church has strong links with its community and is characterised by a friendly, family orientated environment, biblical teaching and openness to the Holy Spirit, a heart for mission and a high degree of participation.

Our vision and mission

The church's mission is: -

To be a church energised by the love and power of God, growing as followers of Jesus and sharing His hope with our community, city and world.

As a church we are committed to live increasingly like Jesus and nurture, equip and empower people to walk in their identity and purpose, sharing their faith with others.

Our story

Chiltern Church, established more than 80 years ago, consists of people drawn from a wide variety of church and unchurched backgrounds and we identify ourselves as an independent evangelical church. More locally we are involved with Churches Together in Sutton and Cheam and Community Works. Following the appointment of Jason Humphreys as our Senior Pastor in December 2016, and the appointment of Ryan Todd as the church's Youth and Worship Pastor in 2018, the church is in the midst of an exciting period of further development and growth.



Activities and programmes

Details of the church's activities are set out on the church website. Particular aspects of the church programme are as follows: -

- **Sunday morning services** – Sunday morning services are varied through the course of the month, sometimes focusing more on worship, families and children, prayer or mission.

Around 100 adults and children normally attend our morning service. Children and youth come to the first part of the service and then join their groups. Recordings of Sunday sermons are available to listen online.

- **Sunday evening services** - Our evening worship service is about taking time out to encounter God with other people who love Jesus and desire to grow in experiencing God through worship. We now have a core group of around 30 adults.

- **Messy Church**- meets on the first Sunday afternoon of each month (excluding school holidays) and provides a mix of activities (craft, games, meal and celebration) for young families. On average about 65 adults and children attend each meeting, though we will often have close to 100 people on our more popular weeks.

In addition to these main services, the church is also busy all through the week.

- **Tots & Toys**- is the church's group for toddlers, parents and carers. It serves on average around a hundred families a week over four sessions and has a very good reputation amongst young families in the borough.



- **Children and Youth ministry**

Ministry to Children and Youth is a priority in our church life. "Sunday Special" (our Sunday school) and Monday Club (our after-school club on a Monday) serve children up to and including school Year 6. Each of these activities caters for a group of approximately 25 children. "Pursuit" caters for youth from Year 7 upwards with a new Friday night ministry to teens that has been running for just over a year.

The youth ministry has now been strengthened by the recent appointment of a new Youth and Worship pastor and serves a group of approximately 20 young people. **The children's ministry is buoyant and growing and the new role of Children & Families Leader has more time available than its preceding roles to develop ministry to children and parents.**

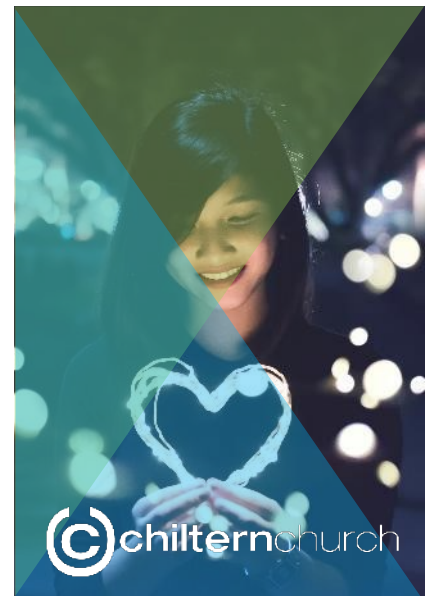
- **Small groups (Connect Groups)** *Connect groups* are a key part of the life of the church and meet regularly to pray, study the bible, have fun together and provide pastoral care. The church currently has 7 groups serving over 60 people.

- **Cameo-** Our popular seniors' group meets every Wednesday and follows a very varied programme.

- **Community outreach** - We also seek to build bridges into our community with a mix of events, courses such as Alpha, a runners' group, "Dad's cinema club", a church newsletter and social action.

- **Worship**

At Chiltern the style of worship is contemporary and informal. The church is fortunate to have a small but talented worship group which covers a variety of musical expression. We see worship as a key area of focus for the church in this season, not only in main Sunday services but across all the main gatherings of the church.



Our fellowship

Our fellowship reflects the diversity of our surrounding area. We have almost 100 members but more than 160 adults see Chiltern as their church community, connecting with either our morning service, our evening worship service or Messy Church. Around 60% of these live within one mile of the church. We are in contact with many more adults who attend church activities from time to time.

Chiltern's busy programme is made possible by two-thirds of the membership taking on responsibility for leading or helping to run activities. There is frequent communication within the fellowship on current news, prayer requests and other developments.



Leadership and staff

The Leadership Team, including the Pastor, are responsible for planning and organising the ministry and day to day operation of the church. The Leadership Team operates as a partnership in which the Pastor acts as senior partner and sets spiritual direction and coordinates the Team. The Pastor also acts as line manager for the staff team. The Leadership Team includes staff and volunteer members.

Chiltern's full and part-time staff team comprises (from September 2019):

- **Jason Humphreys** – the senior pastor who leads the Leadership Team
- **Ryan Todd** – the youth and worship pastor and a member of the Leadership Team
- **Ellen Clist** (part -time) - leads Tots and Toys and manages the assistant leader role. Ellen is due to retire in Spring 2020 and her duties will be taken over by the new Children & Families Leader and Children & Families Worker roles.
- **Alla Lunn** (part-time) - Church Administrator, assistant leader of Tots and Toys and a member of the Leadership Team. Alla's role with Tots and Toys will be developed to take on more responsibility and become the Children & Families Worker role from Spring 2020.

The new role of Children & Families Leader will take over the duties of the former part time role of Children's Worker and overall responsibility for Tots & Toys and also has additional time available to develop ministry to children and parents.

The Trustees of the church oversee employment, finance and property issues and the church's interface with the Charity Commission.

Facilities and finance

The current church building dates from 1932 and has been extended or modernised several times in the last 30 years within the confines of a constrained site to equip it for a growing congregation and an increasing variety of uses. **The most recent extension took place over the Summer of 2019 and increased seating capacity in the main auditorium by 20% and enables the church to accommodate a growing congregation.** The church is fortunate in the generosity of its members and friends in giving regularly to its work and supporting one-off appeals. This has enabled the church to expand its activities, upgrade its facilities and sustain significant reserves. Further details of the church's finances are included in our Charity Commission website entry under our registered charity number 1116502.



Supporting global mission

The Church sets aside 10% of its income to support missionaries, overseas projects, ministry training, mission groups, and emergency relief. We foster relationships with the individuals and groups we support.

Vision & Values

The following pages include the church's vision, beliefs, core values and explanation of the church strapline key words (Loved | Equipped | Involved) which we hope will give a good impression of the church's current focus.



From Jason and the leadership team:

"Our vision for Chiltern Church is to be a community of people so **energised by God's love** that we live lives of **passionate worship and powerful ministry**:

A church **strong in the word of God** and **sensitive to the presence** and life-giving ministry of the Holy Spirit.

A church **committed to live increasingly like Jesus**, loving people with supernatural love.

A church that **can nurture, equip and empower people** to walk in their identity and purpose, sharing their faith with others.

A community committed to **valuing all people**; every generation, the healthy and the broken.

A church that will give **truth, courage, and spiritual strength to the generations** that will follow us.

A church that can **carry the power of God to people in life-giving ministry**, bringing healing and hope and restoration.

A church family confident in the grace and goodness of God; **passionate to bless the community, the city, and the nations** with the ministry of Jesus.

A church **in partnership with others**, raising the level of Christian faith and trust in God across our whole community.

A church where people's lives are transformed as they **meet God and come alive in His presence**.

A church that **embraces the joy and challenge** of this spiritual journey, encouraging one another to take bold steps of faith.

We can see our church **ENERGISED BY THE LOVE AND POWER OF GOD, GROWING AS FOLLOWERS OF JESUS AND SHARING HIS HOPE WITH OUR COMMUNITY, CITY AND WORLD**” July 2017

WHAT WE BELIEVE

We are an independent church that is a member of the Evangelical Alliance which represents 4000 churches in the UK from many denominations. We endorse the basis of faith of the Evangelical Alliance.

OUR BASIS OF FAITH

1. The one true God who lives eternally in three persons — the Father, the Son and the Holy Spirit.
2. The love, grace and sovereignty of God in creating, sustaining, ruling, redeeming and judging the world.
3. The divine inspiration and supreme authority of the Old and New Testament Scriptures, which are the written Word of God—fully trustworthy for faith and conduct.
4. The dignity of all people, made male and female in God's image to love, be holy and care for creation, yet corrupted by sin, which incurs divine wrath and judgement.
5. The incarnation of God's eternal Son, the Lord Jesus Christ — born of the virgin Mary; truly divine and truly human, yet without sin.
6. The atoning sacrifice of Christ on the cross: dying in our place, paying the price of sin and defeating evil, so reconciling us with God.
7. The bodily resurrection of Christ, the first fruits of our resurrection; his ascension to the Father, and his reign and mediation as the only Saviour of the world.
8. The justification of sinners solely by the grace of God through faith in Christ.
9. The ministry of God the Holy Spirit, who leads us to repentance, unites us with Christ through new birth, empowers our discipleship and enables our witness.
10. The Church, the body of Christ both local and universal, the priesthood of all believers — given life by the Spirit and endowed with the Spirit's gifts to worship God and proclaim the gospel, promoting justice and love.
11. The personal and visible return of Jesus Christ to fulfil the purposes of God, who will raise all people to judgement, bring eternal life to the redeemed and eternal condemnation to the lost, and establish a new heaven and new earth.

See the EA Statement of faith online here <http://www.eauk.org/connect/aboutus/basis-of-faith.cfm>



CORE VALUES

The values and focus we recognise as foundational to who we are as a local church.

LOVED “...energised by the love and power of God...”

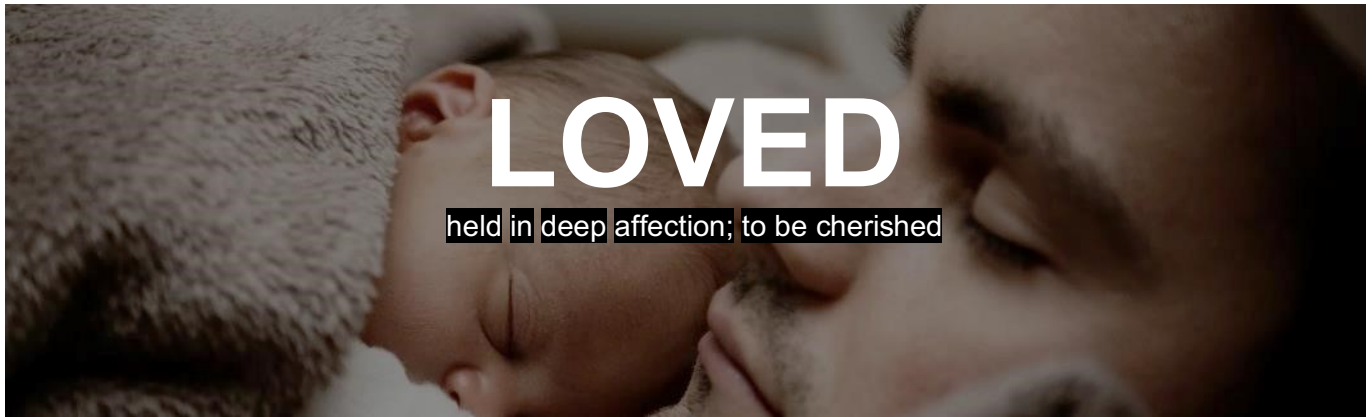
1. We believe in the **power of prayer** and the central role of prayer in all the ministries of the church.
2. We believe in the **value of corporate worship** and ministry to God.
3. We value ministering to **all people** at every age and life stages.

EQUIPPED “...growing as followers of Jesus...”

4. We believe that **Jesus is our model and example** in purity and character, in intimacy and relationship with the Father and the Spirit, and in ministry to people.
5. We value the **fruit of the Spirit** and **Christ-like character** which honours God and gives integrity to our mission.
6. We believe in the value and present reality of all the **spiritual gifts** given by God that both the Old and New Testament describe.
7. We believe in the **value of biblical teaching** and preaching for personal transformation and equipping in ministry.

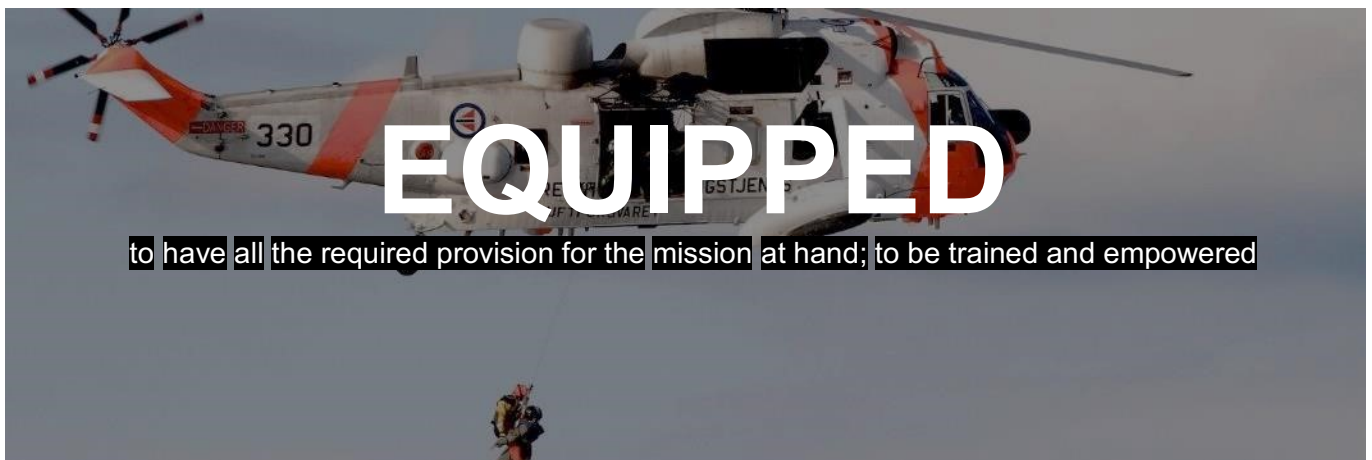
INVOLVED “...sharing His hope...”

8. We value the **collective involvement of the whole church**. We believe that people of all ages and life stages should be engaged in ministry according to their gifting and maturity.
9. We **value ministry which facilitates people coming to a genuine faith** and relationship with God.
10. Following the example of Jesus and the early church, we believe that ministry should be **culturally relevant**.
11. We believe that the church has a **key role in demonstrating compassion** in our community and in our world.



We believe that **we are loved first** and are then able to love others. Every person is loved, cherished and valued by God. The more we engage with this reality the more the love of God flows through us with integrity, so that the church and the community can experience the genuine love and affection of God through us.

John 3:16, Romans 5:8, John 13:34-35, 1 Tim 2:3-4



We believe that as we enter a relationship with God through Jesus, we become His children and God shares his Kingdom with us. We receive from Him by His word and Spirit all the power, love and grace we need to thrive and live lives that are meaningful. The Christian life is learning to live fully with what we have received, so that we can effectively share with others what we have been given.

Matt 10:8, Luke 12:32, Eph 1:3, Col 1: 9-13



The central message of the bible is that God has chosen to be involved in our lives; He created us, loves us and desires to connect with us. His involvement in our lives is what motivates our involvement in the lives of others, within the church and beyond it into the community. We take ownership together of what God is doing in and through the church.

Gen 2:7, Ps 139:1-5, Josh 1:9, Matt 28:20, Rom 8:38-39